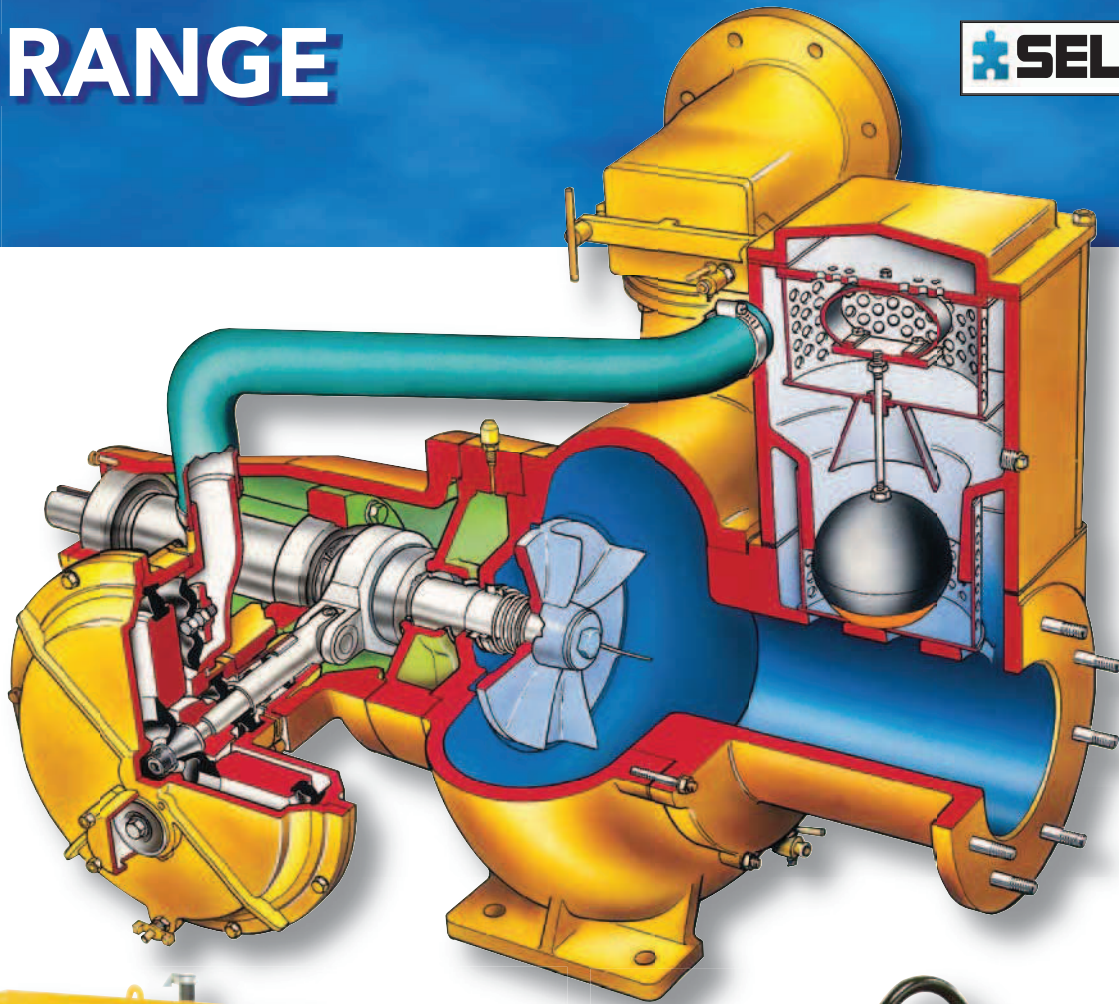


'S' RANGE

SELWOOD



S100
Super
Silent



S150



S300, S200, S150 + S100 Super Silent

Noise
Levels From
59 db(A)



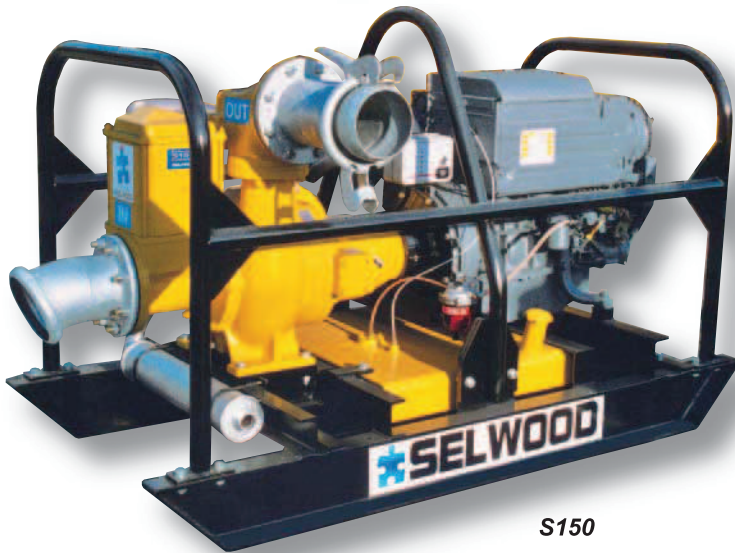
S200



Rags & Fibres



Super Silent



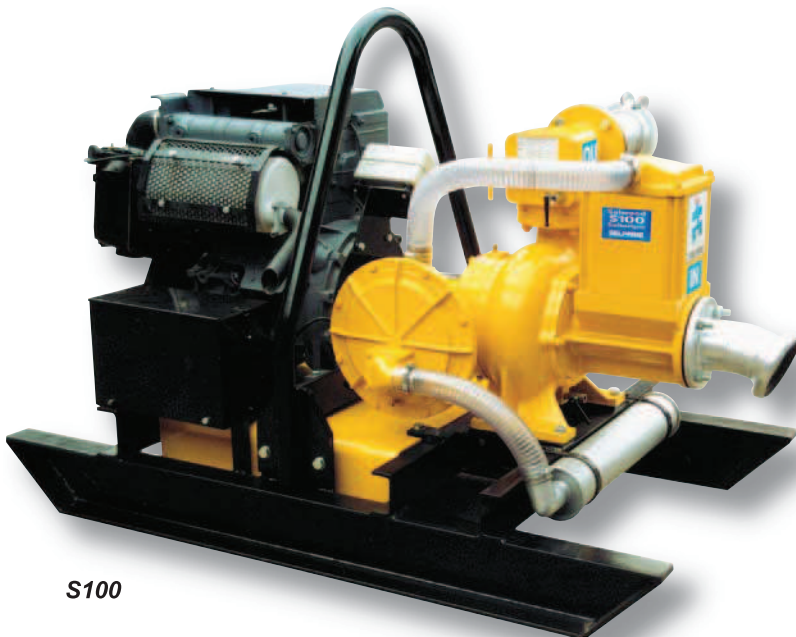
S150



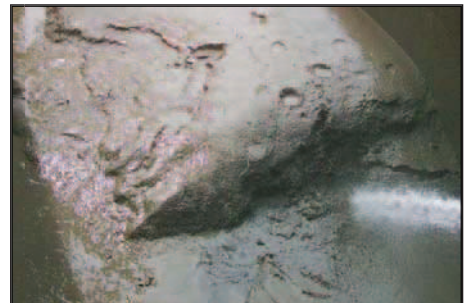
Sewage



Oil



S100

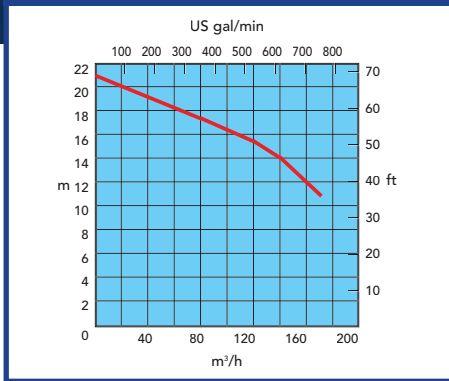


Mud, Silt & Slurry

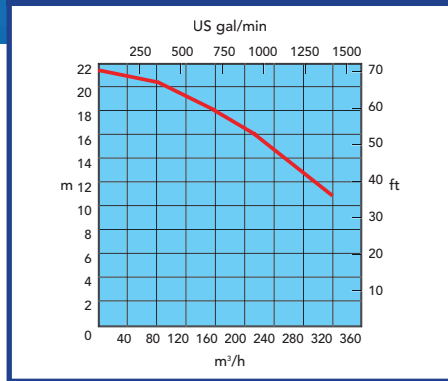


Heavy Iron Oxide

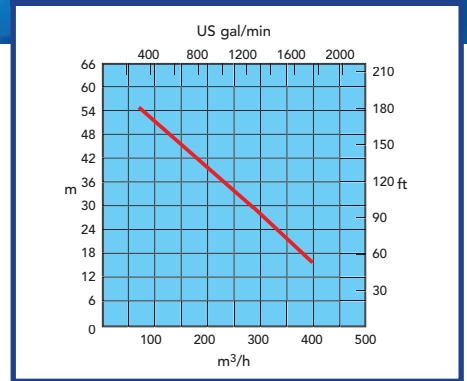
S100



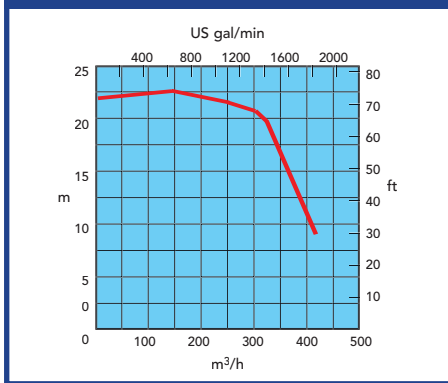
S150



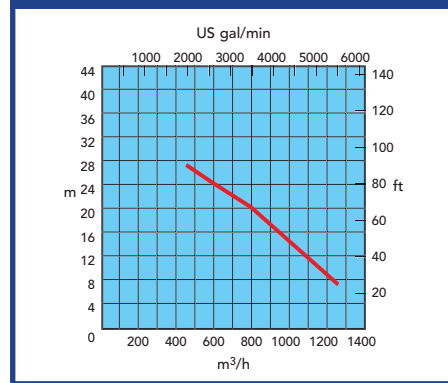
S150SB



S200



S300



	S100	S150	S150SB	S200	S300					
Power Requirement	Puissance Requise	Máx. Potencia Requerida	16 kW	24kW	40kW	63 kW	80kW	Potência requerida	Benodigd vermogen	Leistungsaufnahme
Pump Speed	Vitesse Maximale De La Pompe	Máx. Velocidad de la Bomba	1600 rpm	1600 rpm	1800 rpm	1850 rpm	1600rpm	Velocidade da bomba	Draaisnelheid pompas	Pumpendrehzahl
Capacity	Débit	Máx. Capacidad	160m³/h	320m³/h	395m³/h	414m³/h	1260m³/h	Capacidade	Capaciteit	Leistung
Suction Lift	Hauteur D'aspiration	Máx. Elevación por Succión	9.1m	9.1m	9.1m	9.1m	9.1m	Altura sucção	Zuighoogte	Saugseitige Förderhöhe
Max Solids Size	Dimensions Solides	Máx. Paso de Sólidos	75mm	100mm	75mm	70mm	120mm	Diâmetro de sólidos	Vuildoorlaat	Partikelgröße
Air Handling	Débit D'air	Capacidad Manejo de Aire	24 l/s	24 l/s	24 l/s	24 l/s	24 l/s	Sucção Ar	Luchtverplaatsing	Luftleistung
Inlet / Outlet Port	Diamètres Entrée / Sortie	Ø Aspiración / Descarga	100mm	150mm	150mm	200mm	300mm	Tomada de sucção / recalque	Zuigaansluiting / Persaansluiting	Saug-/ Druckanschluss
Delivery Head	Hauteur Totale	Máx. Altura de Descarga	21.3m	21.3m	58m	22.7m	27m	Altura de recalque	Opvoerhoogte	Förderhöhe

Specifications and illustrations are subject to revision without notice.
 Les spécifications et illustrations sont sujettes à révision sans préavis.
 Las especificaciones e ilustraciones están sujetas a revisiones sin notificación previa.

As especificações e ilustrações estão sujeitas a revisão sem aviso prévio.
 Specificaties en illustraties kunnen zonder bericht worden gewijzigd.
 Spezifikationen und Abbildungen können ohne vorherige Benachrichtigung geändert werden.



Selwood Limited, Bournemouth Road, Chandler's Ford, Eastleigh, Hampshire, SO53 3ZL. UK

Tel: +44 (0)23 8026 6311 Fax: +44 (0)23 8026 0906

Web: www.selwoodpumps.com Email: pumpsales@selwoodpumps.com