

TEREX® | PEGSON

Tracked Cone Range | Quarrying · Contracting



Terex Pegson Ltd

Mammoth Street, Coalville, Leicestershire, LE67 3GN, England.
Tel: +44 (0) 1530 518 600 Fax: +44 (0) 1530 518 618
email: pegson.sales@terex.com • www.terexpegson.com

North America Office

Terex Crushing and Screening Inc. 11001 Electron Drive,
Louisville, Kentucky, 40299 USA.
Tel: +1 502 736 5200 • Fax: +1 502 736 5202
email: mail@terexcs.com



The material in this document is for information only and is subject to change without notice. Terex Pegson assumes no liability for errors or omissions in this document, or from the use of the information contained herein.

We reserve the right to change specifications without notice due to continual product development.

Product performance figures given in this brochure are for guidance purposes only. This information does not constitute an expressed or implied warranty or guarantee, but shows test examples provided by dealers. These results will vary depending on feed material gradings, mesh sizes, feed source and types of material being processed.

Photographs are for illustrative purposes only. Some or all of the machines in the illustrations may be fitted with optional extras.

Please check with your dealer for details on optional extras.

Terex is a registered trademark of Terex Corporation in the United States of America and many other countries.

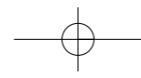
Copyright Terex Corporation 2008.

Published & Printed in August 2008.

Your Local Authorised Terex® Pegson Dealer:

MODELS

- 1000 Maxtrak
- 1300 Maxtrak
- 1000SR



TEREX® | PEGSON

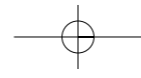


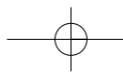
TRACKED CONE RANGE

THE RIGHT CHOICE

In today's market you need an edge over your competitors and Terex Pegson has the solution. Our tracked cone range has been designed to meet the stringent demands of our customers. Where high throughput, big reduction and excellent product shape is required then this plant is the right choice.

Backing up this line of crushing products is a global network of dealers dedicated to providing fast and reliable product support in your locality.





Terex® Pegson 1000 Maxtrak

DESIGNED TO PERFORM

The high performance Terex® Pegson 1000 Maxtrak crusher has been designed for direct feed applications without pre-screening on clean rock.

At the heart of the Maxtrak is the Terex® Pegson Automax® cone crusher with hydraulic setting, tramp release and unblocking system. Its unique crushing action produces high quality aggregate and sub-base material. Available with a choice of four liners and two "eccentric" throws it will give excellent capacity, high reduction and good product cubicity.

The Maxtrak plants are fitted with a feed hopper that enables the Automax® to be continually choke fed. This is essential for all cone crushers to maximise the reduction and manganese life as well as for optimal product shape. A level probe over the feed ring regulates the feed belt to ensure the Automax® is perfectly fed.



An optional feed hopper level probe is available for applications where the source of the feed is intermittent and unable to keep the cone crusher continuously choke fed.

To achieve optimum performance the crusher should be fed with well graded material from the maximum feed size down to zero. Any fines in the feed should be clean crushed rock.

An optional short throw eccentric is available as a special order for the 1000 Automax® for tight settings and particularly abrasive applications.

For further details please contact your Terex® Pegson dealer.



▲ HIGH PRODUCTION CAPACITY
A Terex® Pegson 1000 Maxtrak on a limestone application.



▲ The 1000 Maxtrak has been designed to maximise throughput, reduction and product shape in a wide range of quarrying applications.

AUTOMAX® CRUSHER MODEL	MAXIMUM FEED SIZE	TYPICAL CLOSED SIDE SETTINGS AND CAPACITIES					
		CSS	19mm / 3/4"	22mm / 7/8"	25mm / 1"	28mm / 1 1/8"	32mm / 1 1/4"
1000 MC Long Throw	160 / 6 1/4"	tph	155 / 171	170 / 187	180 / 198	195 / 215	210 / 231
1000 C Long Throw	175 / 6 7/8"	tph		175 / 193	187 / 206	205 / 226	220 / 242
1000 XC Long Throw	195 / 7 7/8"	tph			195 / 215	215 / 237	230 / 253

The plant performance and minimum setting capability will depend on feed material condition, grading and density.

Transport Dimensions	
Length:	15.1m / 49'7"
Width:	2.8m / 9'3"
Height:	3.45m / 11'4"
Weight:	31.3 tonnes / 34.5 US tons (Basic plant)

AUTOSAND CRUSHER MODEL	MAXIMUM FEED SIZE	TYPICAL CLOSED SIDE SETTINGS AND CAPACITIES			
		CSS	13mm / 1/2"	16mm / 5/8"	19mm / 3/4"
1000 Long Throw	63 mm / 2 1/2"	tph	120 / 132	130 / 143	145 / 160

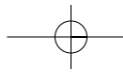
The plant performance and minimum setting capability will depend on feed material condition, grading and density.

Advantages

- ▶ Accepts clean all in feed
- ▶ No need for pre-screening on most applications
- ▶ Excellent product shape
- ▶ High reduction
- ▶ Hydraulic crusher setting
- ▶ Metal detector fitted as standard
- ▶ Hydraulic release
- ▶ Feed hopper level control for continuous choke feeding
- ▶ Dust suppression sprays fitted as standard

Unit Components

Crusher type:	Terex® Pegson 1000 Automax® Crusher fitted with long throw eccentric.
Feeder:	1m / 39" wide
Feed Hopper:	Abrasion resistant steel fixed feed hopper
Hopper length:	3.38m / 11'1"
Hopper width:	2.5m / 8'3"
Capacity:	Up to 4.4m³ / 5.8 yd³
Powerpack:	Caterpillar C-9, TIII ACERT; 242kW / 325Hp at 1800rpm at sea level



Terex® Pegson 1300 Maxtrak

DESIGNED TO DELIVER

The 1300 Maxtrak is the largest Terex® Pegson tracked cone crusher and is suitable for secondary and tertiary applications and as a primary crusher on gravel crushing applications with capacities up to 350 tph / 386 stph depending on the application.

Based around the unbeatable 1300 Automax® cone crusher, the 1300 Maxtrak features a system with a large feed hopper which is able to take an 'all-in feed' from the jaw crusher, thereby improving cubicity, throughput and reduction ratios whilst keeping capital costs to a minimum.

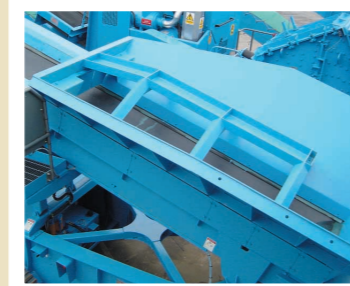
Setting adjustment can be made 'on the run' using the touch button controls. Dust suppression sprays and metal detection are both included as standard. Without question, the 1300 Maxtrak is one big step ahead of the competition in its size, productivity and operating efficiency.



A range of optional extras are available including a Autosand concave, feed hopper extension plates and a electric refuelling pump.

Advantages

- ▶ Excellent product shape
- ▶ High reduction ratios
- ▶ No need for pre-screening on most applications
- ▶ Metal detection
- ▶ Self-contained diesel driven plant
- ▶ Crusher level controls fitted as standard
- ▶ 3.5m / 11'6" high product discharge conveyor
- ▶ Hydraulic crusher setting adjustment
- ▶ Simple electrical and hydraulic circuits
- ▶ Choice of concave
- ▶ Capacities of up to 350 tph / 386 stph
- ▶ Dust suppression sprays fitted as standard



▲ FEED HOPPER
Heavy duty feed hopper with impact channels to protect feed belt.



▲ FEED BOX
Fabricated to control choke feed with level probe to monitor the flow of material through the crusher.

CONTROL PANEL ▶

The 1300 Maxtrak hydraulic control panel enables an operator to change the crusher setting in seconds without stopping and gives read out of manganese wear condition.



1300 Automax® Medium Coarse Concave

1300 Standard: Maximum Feed Size 220 mm / 8 1/2"

The plant performance and minimum setting capability will depend on feed material condition, grading and density.

CSS	25mm / 1"	28mm / 1 1/8"	30mm / 1 1/16"	32mm / 1 1/4"
tph	285 / 314	300 / 330	325 / 358	350 / 386

1300 Autosand®

1300 Standard: Maximum Feed Size 63mm / 2 1/2"

The plant performance and minimum setting capability will depend on feed material condition, grading and density.

CSS	16mm / 5/8"	19mm / 3/4"	22mm / 7/8"
tph	200 / 220	220 / 242	240 / 264

Transport Dimensions

Length:	16.0m / 52'6"
Width:	3.0m / 9'11"
Height:	3.8m / 12'6"
Weight:	45.8 tonnes 50.5 US tons



▲ HIGH CAPACITIES
The 1300 Maxtrak is capable of capacities up to 350 tph / 386 stph depending on the application.

Unit Components

Crusher type:	Terex® Pegson 1300 Automax® Crusher.
Feeder:	1.3m / 52" wide x 5.4m / 17'9" long belt feeder
Feed Hopper:	Abrasion resistant steel fixed feed hopper
Hopper length:	3.5m / 11'6"
Hopper width:	2.79m / 9'2"
Capacity:	Up to 7.0m ³ / 9.2 yd ³
Powerpack:	Caterpillar C-13 Tier III ACERT; 328kW / 440Hp at 1800rpm at sea level

Terex® Pegson 1000SR

DESIGNED FOR SUCCESS

The Terex® Pegson 1000SR combines the incredible 1000 Automax® cone crusher and a double deck screen to provide a complete crushing and screening process on a single chassis for secondary and tertiary applications.

The 1000SR is able to produce one, two or three stockpiles. Material crushed by the Automax® is transferred to a double deck screen and oversize material can be re-circulated back to the cone crusher via an on-board conveyor.



Optional equipment available with this machine includes a 500mm /20" wide stockpiling conveyor and choice of concaves - Automax® extra coarse, coarse, medium coarse and Autosand®.

Advantages

- ▶ Combined crushing and screening in one plant
- ▶ Proven and unique Automax® technology
- ▶ Able to accept "all in feed" in most cases
- ▶ Able to recirculate oversize material
- ▶ Excellent product shape on most applications
- ▶ High reductions
- ▶ Capable of producing three products from one plant using optional stockpiler
- ▶ Heavy duty chassis and track frame
- ▶ Dust suppression sprays fitted as standard



CONVEYOR

This conveyor can be used to recirculate oversize from the top deck to the Automax® for recrushing or as shown in the photograph, it can be used to stockpile oversize material at the side of the plant.

Transport Dimensions

Length:	17.2m / 56'6"
Width:	3.1m / 10'2"
Height:	3.45m / 11'4"
Weight:	38.4 tonnes 42.3 US tons

Crusher Options

Concave	Max feed size
Medium coarse	160mm / 6 1/4"
Coarse	175mm / 6 7/8"
Extra coarse	195mm / 7 5/8"
Autosand®	63mm / 2 1/2"

The plant performance will depend on feed material condition, grading and density. As a general guide use the 1000 Maxtrak page for performance however these figures will be affected by screen meshes used and the quantity of recirculated material.



SCREEN

The screen can be lowered for maintenance purposes.*



SCREENED PRODUCT

The 1000SR has the ability to produce one, two, or three products sizes.

Unit Components

Crusher type:	Terex® Pegson 1000 Automax® Crusher fitted with long throw eccentric as standard
Feeder:	1m / 3'4" wide x 5.4m / 7'9" long belt feeder
Feed Hopper:	Abrasion Resistant steel fixed feed hopper
Hopper length:	3.14m / 10'4"
Hopper width:	2.54m / 8'4"
Capacity:	Up to 4.4m³ / 5.8 yd³
Powerpack:	Caterpillar C-9, Tier III ACERT; 261kW / 350Hp at 1800rpm at sea level
Screen:	2 deck, 4-bearing 3.35 x 1.53m / 11' x 5"



OPTIMUM PERFORMANCE

1180 Premiertrak feeding a 1000SR.

*Screen Assembly
UK Patent no.GB2386848B, US Patent No. US 6,877,610 B
and Patent pending in Germany (DE10305589A)

Combination Plants

SETTING THE STANDARD

Terex® Pegson combination crushing plants are the bench mark for operators who require high performance tracked crushers.

A key advantage with this range of equipment is its ability to work in tandem with other machines in multiple product operations. A combination of tracked jaw, cone and impact crushers can be used together with tracked screens to give a variety of different plant configurations.

AFTER SALES

Our dealers are committed to supporting every aspect of your operation from supplying products and spare parts to commissioning and servicing equipment. Their expertise will help you to improve productivity and lower operating costs throughout the working life of your machine.

PARTS

At Terex Pegson we know the right parts can make the difference to the efficiency and performance of your equipment so when you buy Terex Pegson parts you can expect:

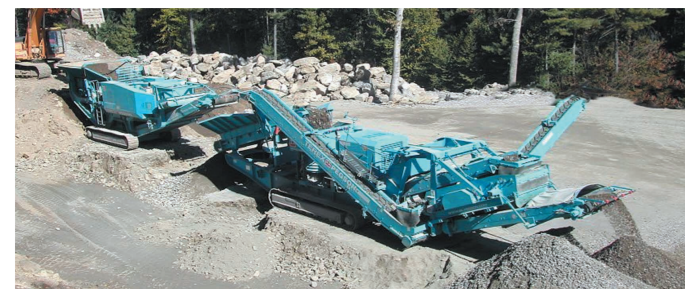
- ▶ Availability
- ▶ Competitive prices
- ▶ Warranty compliance
- ▶ Fast delivery
- ▶ Specification compliance

FINANCIAL SOLUTIONS

Terex Financial Solutions simplify capital equipment purchase by offering finance arrangements and customised payment plans to suit your business requirements. (Available subject to status and location.)

WARRANTY

Subject to our sales terms and conditions all new Terex® Pegson crushing plants carry a 12 month warranty.



▲ An 1165 Premiertrak feeding into a 1000SR on a quarry application.



▲ Two stage crushing showing a 1165 Premiertrak feeding a Maxtrak 1000 producing sub-base material.



▲ 1165 Premiertrak working with a 1000 Maxtrak to produce 40mm / 1 1/2" sub-base on a basalt application.



▲ An 1180 Premiertrak feeding 1300 Maxtrak producing type 1 sub-base at 300tph / 330 Stph



▲ An 1180 Premiertrak feeding a 1300 Maxtrak to produce road base material.